



Gopeshwar Group

# GOPESHWAR IRON & STEEL WORKS PVT. LTD.



AN ISO 9001 : 2008 CERTIFIED COMPANY

## HEAT RESISTANCE POWER MOULD

## INTRODUCTION

Gopeshwar started its operations in the year 2003 as an Ingot Mould Manufacturer in Durgapur. We have established ourselves as an accomplished manufacturer, exporter and supplier of Ingot Mould. With passage of time, we went for further classification of products. Our products meet the requirements of various Integrated Steel Plants, Foundaries and Ferro Alloy Product Manufacturer. We also go for Regular Innovation in products through constant Research and development with the help of latest modern technology.

Gopeshwar Iron and Steel is an ISO 9001:2008 certified Company which provides Quality Products to the customers at a reasonable price and serves Quality Service to the customer by providing timely delivery of Ingot Mould in India as well as in different parts of the world. The products manufactured by us generally include Cast Iron products such as C. I. Ingot Mould (Singlet & Duplex), Slag Pot, Centre Column, Bottom Plates, Sinter Pan, Circular Pan, Rectangular Plate as per customer's drawings and Required Specifications. All these products manufactured go through Stringent Quality Control Operation at each and every level of Production Process in order to ensure Quality efficient Products, complete Customer Satisfaction and Zero defect Products and are tested and checked equally before despatch.

The group gives emphasis on sourcing proper cost efficient and Quality Raw Materials from the Suppliers and believes in maintaining the consistency in Quality and makes efforts in continuous development in the activities of the Production and Marketing and does not believe in compromising with the Quality of the Products and Services being committed to the Customers by the group.



**PIG IRON**



**COAL**



**LADLE**



**POURING**



## QUALITY ASSURANCE

- Integrated quality checks ensure that the material from each stage adheres to the standards.
- The quality assurance department takes care of making each batch against set specifications.
- The quality lab is equipped with the required departments for quality assurance including impurity test and strength test.

## OUR KEY BUSINESS POLICIES

- Shorter lead times / minimum turnaround time.
- Competitive prices to keep our buyer ahead of competition.
- Timely delivery.
- Direct access to latest designs & new products.
- Customization / Flexibility to the buyer.
- Strong market reach & research.
- Elimination of any language and cultural barriers.
- Customers come First, they are our concern. We strive to understand their needs.
- Adapt new Technology to be Innovative to produce Quality Castings with pride
- Experienced Merchandisers who work closely with our customers
- Team of sourcing specialists who have deep understanding of the Market along with the Industry Trends.

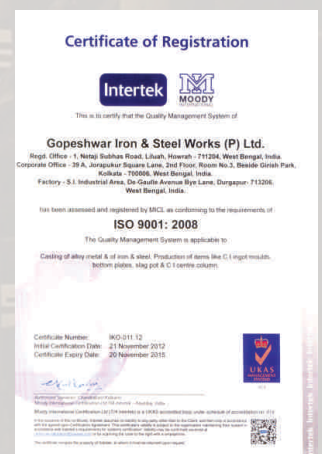


**TESTING LABORATORY**

## OUR STRENGTH

We rely on our rich vendor base and extensive distributional network, to meet the ever increasing demands of our clients. It is the sheer dedication and hard work of our team that we have been able to spread the reach of our products across the globe. Owing to our cordial business relations with vendors and our efficient international and domestic dealers, we ensure that our clients receive the ordered consignment well on time.

**Quality is  
Never  
an accident**



## MANUFACTURING FACILITIES

The Infrastructure is facilitating with the Modern Technology Machines to achieve high Quality Standards in our Products.

- Cupla Furnace in 1 hr 3 ton melted metal
- Fresh Cutter Machines of different Ranges
- Grinding Machine with different capacity
- Circular grinding machine
- Vertical Drilling Machine
- Chemical Laboratory
- Physical Laboratory
- EOT Cranes capacity (5 to 15 mts)
- Lath Machine
- Sand Plant
- Sand testing Laboratory
- Metallography Laboratory
- Spectrometer
- With Pattern Shop and Drawing Department

## PRODUCT PROFILE

We manufacture various sizes Products with capacity of castings to 15 MTs a single piece. We go for various patterns, drawings and specifications in our Products.

Our Castings are widely appreciated for their high quality standards and durability. These comply to various industrial standards and are tested on various parameters before being supplied to the clients.



**LADLE POURING SECTION**



**QC / INSPECTION DEPARTMENT**



**GRINDING & FETTLING DEPARTMENT**



**MACHINE SHOP DIVISION**



## C.I. DUPLEX INGOT MOULDS

2½" x 3½" x 54"

2½" x 3½" x 60"

3" x 4" x 54"

3" x 4" x 60"

3¼" x 4¼" x 54"

3¼" x 4¼" x 60"

3¾" x 4¾" x 60"

3½" x 4¼" x 54"

3½" x 4¼" x 60"

4" x 5" x 54"

4" x 5" x 60"

4¼" x 5¼" x 58"

4¼" x 5¼" x 60"

4¾" x 5¾" x 60"

4¼" x 5¼" x 62"

4½" x 5½" x 54"

4½" x 5½" x 60"

5" x 6" x 54"

5" x 6" x 60"

5½" x 6½" x 54"

6" x 7" x 50"

6½" x 7½" x 50"

We also make any size of C.I. Ingot Mould as per Customer's Drawing / Specification.

## BOTTOM PLATES:

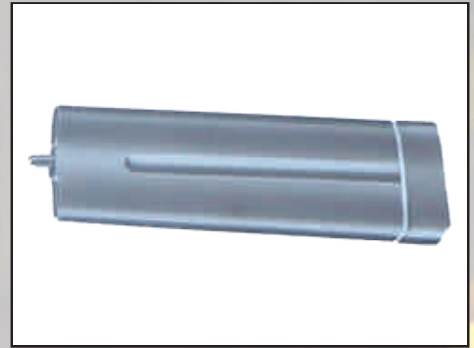
We also make any size of C.I. Bottom Plate as per Customer's Drawing / Specification.

## SLAG POT:

We also make any size of C.I. Slag Pot as per Customer's Drawing / Specification.

## C.I. CENTER COLUMN:

We also make any size of C.I. Center Column as per Customer's Drawing / Specification.



**C. I. INGOT MOULD**



**C. I. BOTTOM PLATE**



**C. I. SLAG POT**



**C. I. CENTRE COLUMN**

## MAN HOLE COVER :

300X300X7/11/18 KG. S.S COVER & FRAME  
300X300X18/22/28/35 KG. D/S COVER & FRAME  
300X300X25 KG. 4 CM RECESS COVER & FRAME  
300X300X30/35 KG. 7 CM RECESS COVER & FRAME  
450X450X25/28 KG. S/S COVER & FRAME  
450X450X38/75 KG. D/S COVER & FRAME  
450X450X40 KG. 4 CM RECESS COVER & FRAME  
450X450X55 KG. 7 CM RECESS COVER & FRAME  
600X600X30 KG. S/S COVER & FRAME  
600X600X40/50 KG. D/S COVER & FRAME  
600X600X75/80/90/110/140 KG. D/S COVER & FRAME  
600X600X55 KG. 4 CM RECESS COVER & FRAME  
600X600X70/80/90 KG. 7 CM RECESS COVER & FRAME  
800X800X100/130 KG. D/S COVER & FRAME  
900X900X120/180 KG. D/S COVER & FRAME

We also make any size of C.I. Manhole Cover & Frame as per Customer's Drawing, Pattern or Specification.

## CUSTOMER SERVICES

- Ability to design and develop the Products of Cast Iron as per Customer's requirements.
- Ability to qualify responds to the Customer's price request and technical question.
- Willingness to learn and adapt to customer's needs.
- Ability to serve quickly to the urgent requirements.
- Innovative and supportive problem selling approach.
- Timely delivery.

## VISION

To become one of the world's biggest & respected cast iron industry.

## MISSION

To charge as an Indian brand & deliver exceptional custom made products across the globe. This will be achieved by creating mutually beneficial relationship with our customers, suppliers, employers, bankers etc.



C. I. MANHOLE COVER



C. I. MANHOLE COVER

## ABOUT OUR UNIT - II

To provide best service to our valuable customers and to fulfil their requirements we are committing to establish a new Industry (Unit - II) at AMTA ROAD, W.B., INDIA where we will manufacture Grey Iron, Ductile Iron, Steel manufacturing along with Iron Casting upto 50 MT single piece and we promise to provide Quality Products by using latest Technology.



## OUR GLOBISATION

We are happy to announce that we are the part of the Global World and planning to go overseas Market with our product in various parts of the World like Bangladesh, Bhutan, Nepal, Sri Lanka, Indonesia, Kingdom of Saudi Arabia, U.A.E. And all Middle East Countries also in Germany, U.S.A. & other abroad countries too.



## **GOPESHWAR IRON & STEEL WORKS PVT. LTD.**

**MANUFACTURER & EXPORTER OF CAST IRON CASTINGS**

**Corporate Office :**

39A, Jorapukur Square Lane, 2nd Floor, Suit No. 3  
(Beside Girish Park & C. R. Avenue) Kolkata - 700 006, W.B., India  
Telefax : +91 33 4000 1146

**Regd. Office :**

1, Netaji Subhas Road, Liluah, Howrah - 711204, W.B., India  
Phone : +91 33 2645 2371 / 2675 9710  
E-mail : info@gopeshwargroup.com

**Works :**

S. I. Industrial Area, De-Gaulle Avenue, Bye Lane, Durgapur - 713206, India  
Dist. : Burdwan, W.B., India, Ph. : +91 343 3292160  
E-mail : sales@gopeshwargroup.com

[www.gopeshwargroup.com](http://www.gopeshwargroup.com)